



**Maryland Emergency Management Agency  
Operations Directorate  
Tropical Storm Weather Briefing**

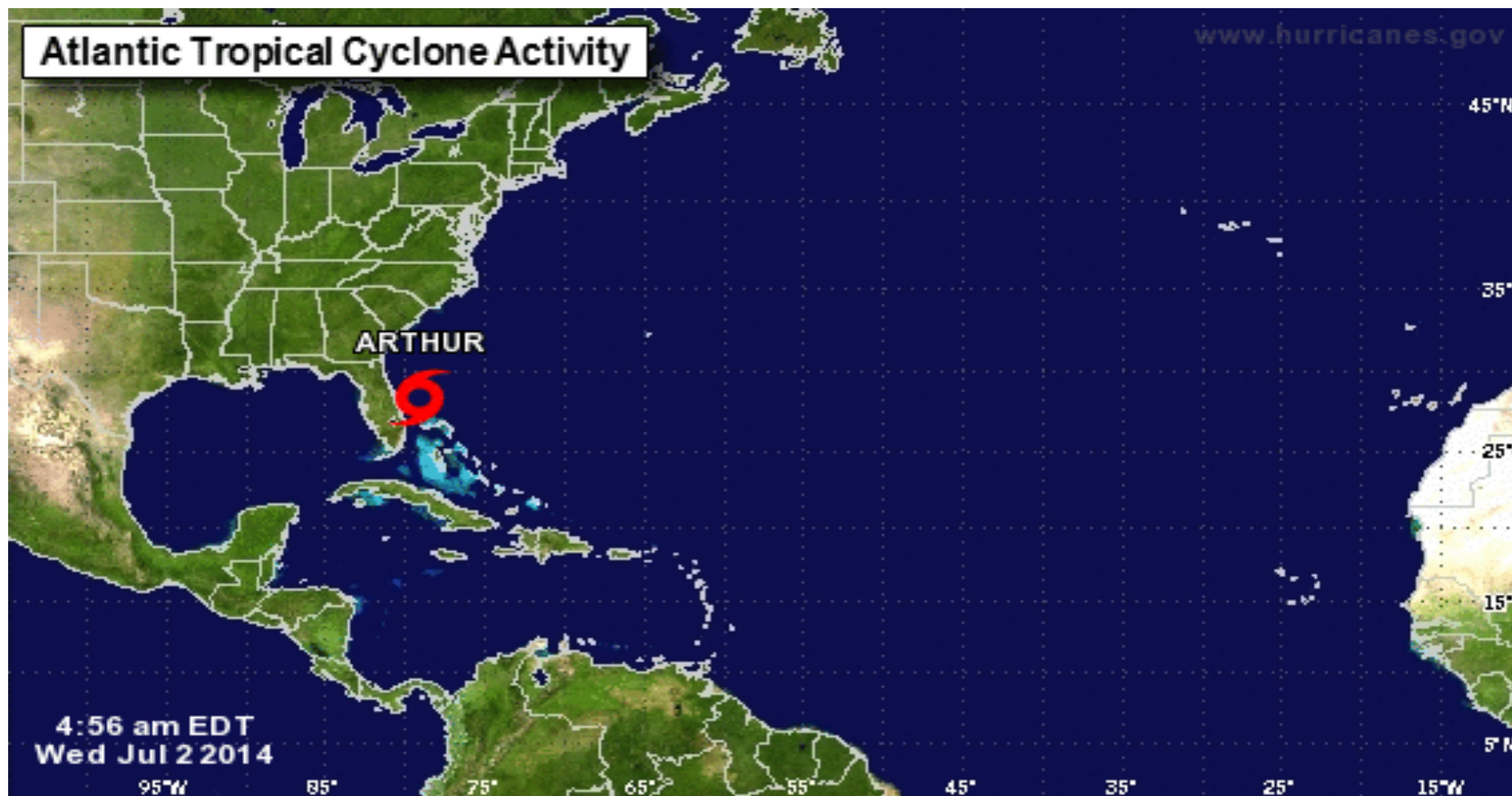
*July 2, 2014*

*06:00 Hrs.*


*“A Prepared Marylander Creates a Resilient Maryland”*

# Atlantic Tropical Storm Activity

Projected Storm Formation  
Tropical Storm Arthur



Current Disturbances and 2-Day Cyclone Formation Chance:  < 30%  30-50%  > 50%

Tropical or Sub-Tropical Cyclone:  Depression  Storm  Hurricane

 Post-Tropical Cyclone  Remnants

# Atlantic Tropical Storm Activity

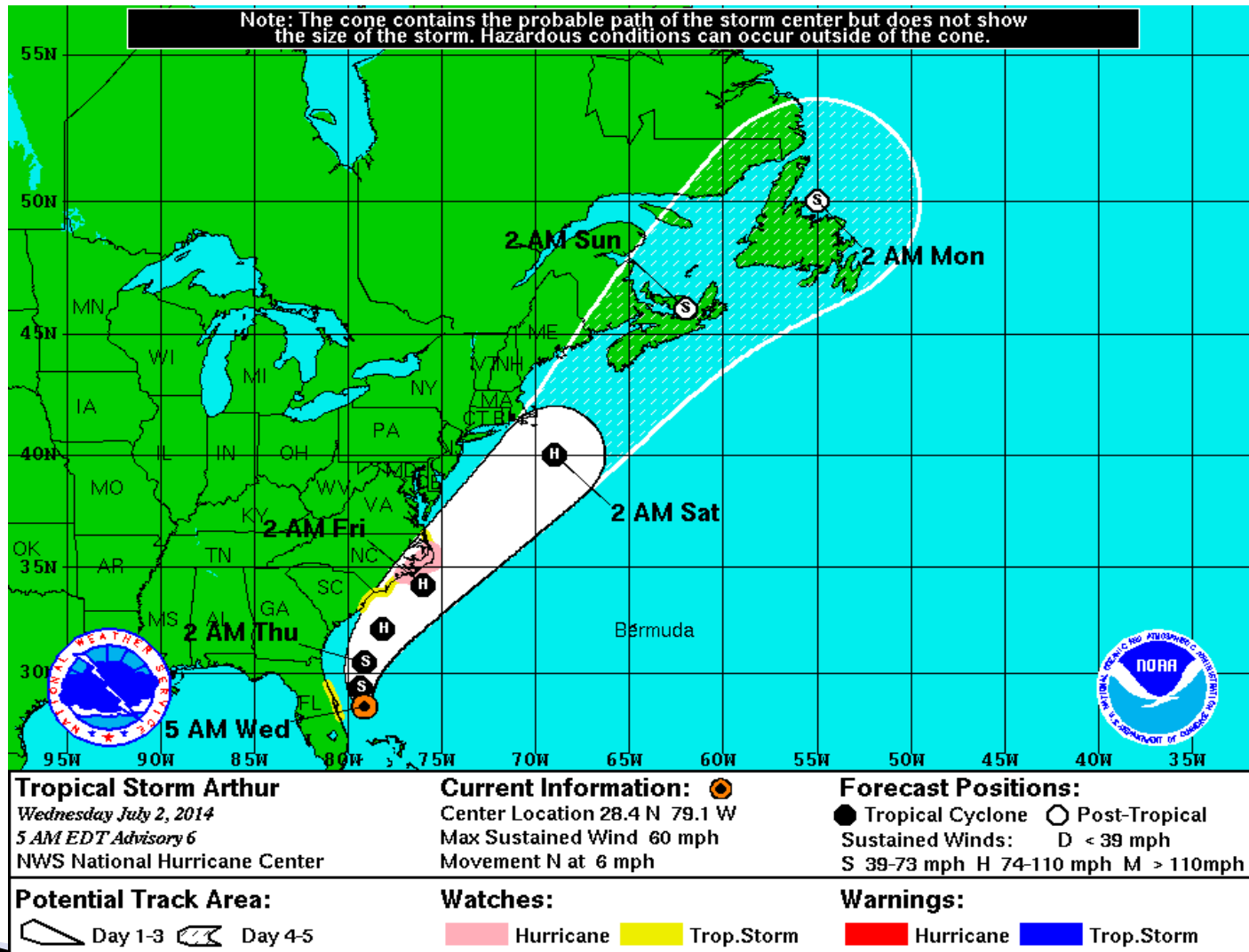
## Location and Storm Speed Tropical Storm Arthur

- ▶ The center of Tropical Storm Arthur is about 90 miles East of the Cape Canaveral, Florida.
- ▶ Arthur is moving toward the North at 6mph. A turn towards the North–Northwest is expected tonight followed by a turn towards the Northeast and an increase in forward speed Thursday.
- ▶ Some strengthening is expected in the next 48 hours and Arthur is expected to become a Hurricane by Thursday
- ▶ Maximum sustained winds are near 60 mph with higher gusts. Tropical storm force winds extend outward up to 80 miles.



# Atlantic Tropical Storm Activity

## 5-Day Forecast and Current Warnings Tropical Storm Arthur

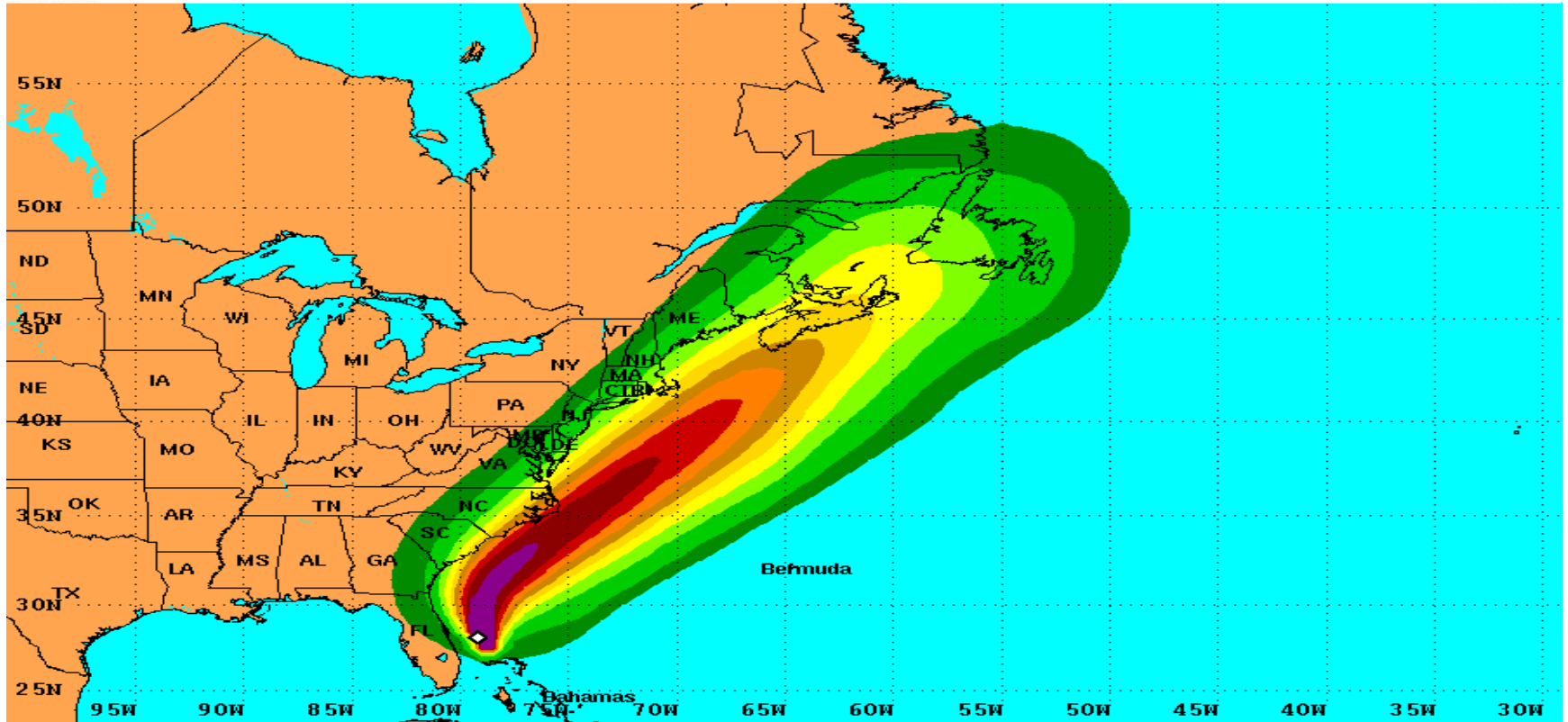


# Atlantic Tropical Storm Activity

## Probability of Tropical Storm Force Winds Tropical Storm Arthur



Tropical Storm Force Wind Speed Probabilities  
For the 120 hours (5 days) from 2 AM EDT Wed Jul 2 to 2 AM EDT Mon Jul 7



Probability of tropical storm force surface winds (1-minute average  $\geq 39$  mph) from all tropical cyclones

◇ indicates TROPICAL STORM ARTHUR center location at 2 AM EDT Wed Jul 2 2014 (Forecast/Advisory #6)



# Atlantic Tropical Storm Activity

## Forecast Modeling Tropical Storm Arthur

